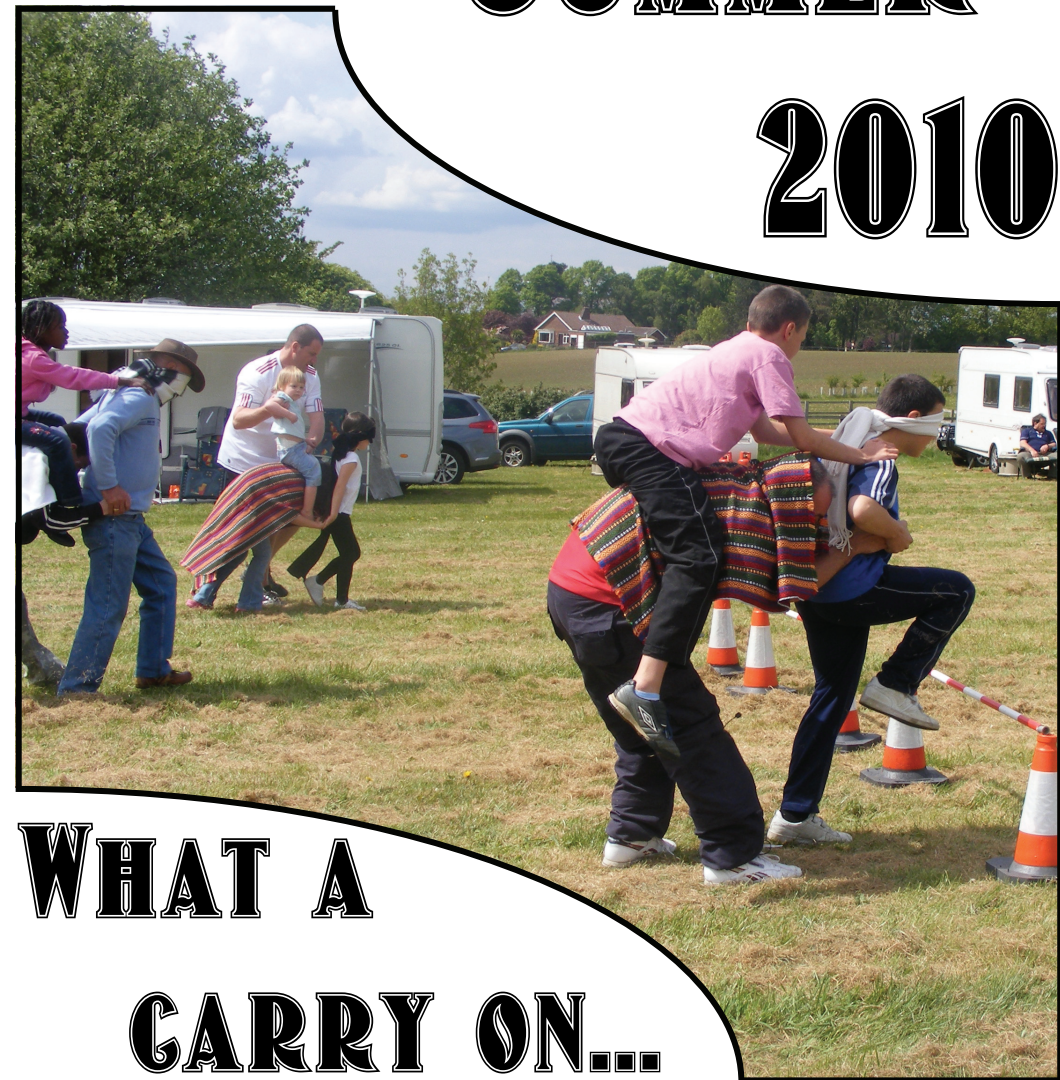




The Caravan Club  
**Bedfordshire Centre  
Rally Goer**

**SUMMER**

**2010**



**WHAT A**

**CARRY ON...**

**Billy  
de  
Laine**

**Bedfordshire Centre's  
AGM**

**And  
Dance Competition  
24 - 26 September 2010  
Entertainment by  
Billy de Laine  
Singer/Comedian**

# Welcome to Chairmans Chat

Dear Ralliers,

Welcome to another edition of the Bedfordshire Centre Rally Goer. It's at this point that I would like to advise you of the sad loss of Cliff Coleman in May and Jenny Waite in June. Although Cliff no longer rallied he had many friends in the Centre. Jenny also had many friends and both will be sadly missed. Our thoughts are with the families at these sad times.

Well summer looks like it may have arrived and with Football and now Tennis on the telly, I can't think of a better reason to get out on the rally field.

For those of you that enjoyed the National in May will know that the Bedfordshire Rally book took second prize in the Rally Book Cover competition held by the Caravan Club. My warmest thanks go to Ivor Gurney for his photograph and Andy Gray for the final design of the cover. Thank you both and let's try for first place next year.

So far this year we have had a wonderful selection of rallies from our Centre Golf Competition, our Events Weekend, the London Eye and the Steam Festival at Belvoir Castle. In addition if you take a look at the rally book you will see that we have some new rally officers that have come forward to run rallies and we also have some new rally sites. My thanks go to all of those that have worked hard to run our rallies, but don't sit at home in the arm chair as still have the rest of the year to go.

Jo is already putting together next years programme so if you still want to run a rally in 2011 or have a new site that we could use, please talk to Jo as soon as possible.

Please remember that our Centre AGM is in September and we are always looking for Centre members to stand on the committee. The Centre needs a good committee to run a successful Centre. Also coming up is our Christmas rally on the 3-5 December 2010 and Jill & Bill Thompson, Pat & Terry Darlow together with Cora and John Moules will be more than happy to take a rally slip from you.

We also have the New Year rally and the Burns Night rally. Please get you rally slips to Tom & Caroline Gilks as soon as possible.

Well that's all I have for now. Caroline and I have enjoyed that last six months with you and look forward to the next six.

See you on the Rally field soon.

**Tom Gilks**  
Chairman

## Members Ads'

Do you have something to sell...

Let the PRO know, and it will appear here and on the Centre's Website.

If your item has been sold, or you no longer wish to advertise it, please let me know

[www.bedscentrecc.com](http://www.bedscentrecc.com)



### Scott Stabiliser (Boxed)...

Box Includes: Scott Stabiliser, Quick Release, Easyfit chassis bracket, Car plate, Scott stabiliser cover ..... £30.00 o.n.o.

**Michael Cole,**  
Tel: 01767 699888

### Venture Trident Awning...

Venture Trident Full Awning to suit an awning rail length of 875cm. Colour - Burgundy/Grey with Fibreglass Poles. .... £200.00 o.n.o.

**Andy Gray,**  
Tel: 01234 302746

### Tyres...

175 x 13 (550x 13) Tyre, Brand New, never been on the road ..... £30.00 o.n.o.  
Winter Wheels, Heavy Duty Type..... £ offers

**Mick Challis,**  
Tel: 01733 571332

### Fiamma Motor Home Cover Top...

To fit 7.5 x 4.3hr, never been used ..... £30.00

**Mr T Leath,**  
Tel: 01767 600193 (evenings only)

#### Contact your PRO:

*Andy Gray*



91 Foster Road,  
Kempston,  
Beds.  
MK42 8BT



01234 302746



[webmaster@bedscentrecc.com](mailto:webmaster@bedscentrecc.com)

Please note, that the information contained within this update is the authors own opinion and does not necessarily reflect that of any other member of the Bedfordshire Centre.

The Editor reserves the right to edit or decline any items sent in for publication

# Just for Fun...

You've got to Laugh...

## QUESTIONS THAT PUZZLE ME!

1. Can you cry under water?
2. How important does a person have to be before they are considered assassinated instead of just murdered?
3. Why do you have to 'add your two cents worth'... but it's only a 'penny for your thoughts'? Where's that extra penny going to?
4. Why does a round pizza come in a square box?
5. What disease did 'cured ham' actually have?
6. How is it that we put man on the moon before we figured out it would be a good idea to put wheels on luggage?
7. Why is it that people say they 'slept like a baby' when babies wake up just about every two hours?
8. If a deaf person has to go to court, is it still called a hearing?
9. Why are you IN a movie, but you're ON TV?
10. Why do people pay to go up tall buildings and then put money in binoculars to look at things on the ground?
11. Why do doctors leave the room while you change? They're going to see you naked anyway.
12. Why is 'bra' singular and 'panties' plural?
13. Why do toasters have a setting that burns the toast to a horrible crisp, which no decent human being would eat?
14. If the professor on Gilligan's Island can make a radio out of a coconut, why can't he fix a hole in a boat?
15. Why does Goofy stand erect while Pluto remains on all fours? Both are dogs!
16. If corn oil is made from corn, and vegetable oil is made from vegetables, what is baby oil made from?
17. Do the Alphabet song and Twinkle, Twinkle Little Star have the same tune?
18. And finally, why did you just try singing the two songs above?

Caroline Gilks  
Hon. Secretary



## Letters

Your chance to communicate with your fellow ralliers.

### Dear Tom,

Please accept my apologies for the delay in writing to thank you for your very kind hospitality during the Bedfordshire Centre Events Rally at Biggleswade.

It was delightful to travel such a short distance on Friday evening and to enjoy such a high standard of entertainment, you will have your work cut out to improve on that one. The wine and spirit tasting of Saturday afternoon was an event Liz and I will remember for a long time, it is rare that we need to resort to aspirin mid-way through the afternoon!

Please convey my thanks to everyone who made Liz and I so welcome and worked so hard to make the rally a great success, we really are most grateful.

Yours Sincerely

*Grenville Chamberlain*  
Caravan Club Chairman



### Congratulations...

Bedfordshire Centre have been awarded second prize in the Rally Book Competition for 2010 by The Caravan Club.

Congratulations to Ivor Gurney who took the photograph and to Andy Gray who designed the front cover of our Rally Book, well done both of you.

The cheque for £250.00 was presented to the Centre at the National Rally by Mr John Page at our Centre Flag.

Great news for Bedfordshire !

Regards

*Caroline Gilks*  
Hon Secretary



*Note from your P.R.O.  
We are mentioned in the July 2010 issue of The Caravan Club magazine on page 8 for this.*

### In Memory...

It is with sadness that we have to inform you that Cliff Coleman passed away peacefully. Although Cliff hadn't rallied for some time, many of you may remember him from one of the many rallies that he did, especially Happisburgh.

Our thoughts go out to his family at this time.

### In Memory...

It is with sadness that we have to inform you that Jenny Waite passed away peacefully on 17th June, aged 59 years. Jenny was seen on many rallies with her husband Rod and her family, Jerry, Mo & Aiden, and Karen, Steve, Deanna, Jordan & Kyle.

She will sadly be missed by her family and friends from the rally field and leaves us all many memories.

### Have you got something for the next edition?

Send your letters, rally write ups, Jokes or whatever it may be to your Centre PRO by 5th September 2010

## London/Brighton Cycle Ride...

Congratulations to our entrants to the London/Brighton Cycle Ride. They all crossed the finish line in approximately 4.5 hours, having covered a distance of 54 miles from Clapham Common to the East Palace Pier in Brighton

Well done to everyone for a great effort.

Thank you to everyone that has sponsored members of the team, anyone still wishing to donate can do so on line by visiting [http://www.justgiving.com/colin\\_richardson](http://www.justgiving.com/colin_richardson) or with any of the individual riders.

The team, pictured here with Grenville Chamberlain consisted of Bill Bowie, Colin Richardson, Mark Hillson & Neil Hannan.

All money raised is going to the British Heart Foundation.

**Andy Gray**  
Centre P.R.O.



**SELF  
STORAGE**

**AFFORDABLE  
PRICES**

01234 750340

**Lock Stock Storage Ltd**

Newlands Farm, Astwood Rd,  
Cranfield, Bedford,  
MK43 0AS

**CONTAINER STORAGE**

**CARAVAN STORAGE**

**24HR CCTV SECURITY**

**EASY ACCESS**

**AFFORDABLE PRICES**

[WWW.LOCKSTOCKSTORAGE.COM](http://WWW.LOCKSTOCKSTORAGE.COM)



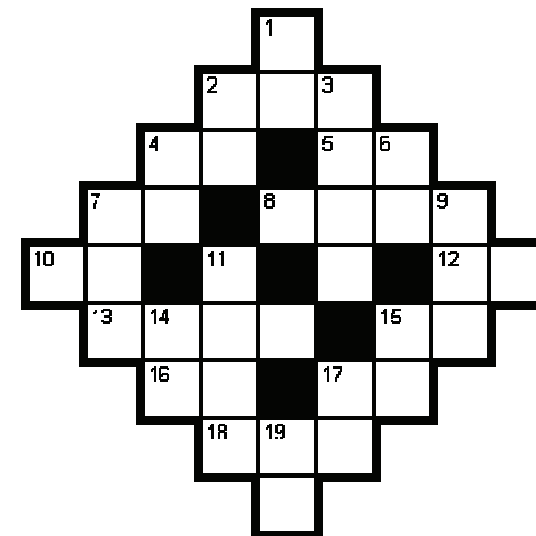
\*CASSOA registered as NF Caravans Ltd No. 673

## Puzzle Page

Can solve the puzzle

### Figure it

Look at the clues below and fill all the numbers you can into the grid. Then start again and use your answers to help solve the other clues.



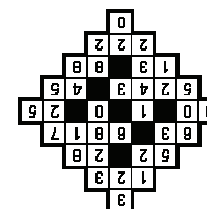
### Across

2. 7 down minus 482
4. Number of weeks in a year
5. Number of days in four weeks
7. Seven times nine
8. 8617 re-arranged
10. 15 down plus forty-two
12. Quarter of 100
13. Half of 10486
15. Half of 10 across
16. Quarter of 4 across
17. Four times twenty-two
18.  $82+62+78$

### Down

1. Four times eight
2. 12 across minus 16 across
3. 1640 doubled
4. 6 down minus 5 across
6. Nine times nine
7. Five times 121
9. Half of 1450
11. 716 doubled
14. A third of sixty-three
15. Number of hours in two days
17. Half of 164
19. 100 divided by five

### Solution



# 2010 Rally Programme Updates

For more information on these rallies visit our website

[www.bedscentrecc.com](http://www.bedscentrecc.com)

## New Rally

<b>Rally No. 45E</b>	<b>Sep 10 - 12</b>	<b>Grafham Water, Club Site</b>
<b>Attractions:</b>	Outdoor swimming pool on site, Fish & Chip van Friday Night. Walking, cycling, fishing, Nature Reserves and visitor centre. Limited electric available, 1st come, 1st served, please indicate if required.	
<b>Directions:</b>	From A1, - turn off A1 at Buckden r/bout onto B661 SP Staughton. In approx ¾ mile turn right SP Grafham. Follow signs to site.	
<b>Postcode:</b>	PE28 0BB	
<b>Rally Officers:</b>	Diane & Colin Richardson with Kate & Mark Hillson Tel: 01767 314019 Mobile: 07802 187292	

## New Rally

<b>Rally No. 48E</b>	<b>Oct 01 - 03</b>	<b>Old Warden Village Hall - New Venue</b>
<b>Attractions:</b>	Biggleswade & Shuttleworth collection near by. Ideal location for pleasant walks. Possible social in village hall Friday & Saturday evenings.	
<b>Directions:</b>	From Bedford, take the A600 towards Shefford. After passing through Deadmans Cross, at cross roads, turn left into Northwood End Road, SP Old Warden/Ireland. After approx 2 miles turn right into Bedford Road. Site on left in approx 1/2 mile.	
<b>Postcode:</b>	SG18 9HQ	
<b>Rally Officers:</b>	Gill & Mick Leath with Sally & Robert Taylor Tel: 01767 682364 Mobile: 07939 453899	

## Rally officers Added

<b>Rally No. 57</b>	<b>Nov 19 - 21</b>	<b>Regional AGM - Princes Risborough</b>
<b>Rally Officers:</b>	June Taylor & The Committee Tel: 01895 255971 Mobile: 07949 489408	

## Rally Cancelled

<b>Rally No. 58</b>	<b>Nov 26 - 28</b>	<b>Aspley Guise</b>
<b>Cancelled:</b>	This Rally has been cancelled, due to great concerns over the size of the entrance to the rally field.	

## Revised Directions

<b>Rally No. 44</b>	<b>Sep 03 - 05</b>	<b>Box End Park</b>
<b>Directions:</b>	From the A421 Marsh Leys (Swan) r/bout take the exit for the A428 SP Bromham/Northampton. At the 1st roundabout go straight on and then at 2nd roundabout turn left onto the A5134 (Cemetery Road) SP Box End. Box End Park is on this road after approximately 1/2 mile on the right. Watch for rally signs.	

Do you have a favourite venue... Is there a venue you would like to rally at... Or perhaps you would like to run a rally...

If so, then let Jo Gray your Rally Secretary know, and she will try to accommodate your wishes.

# Junior's Rally

## 23-25 July 2010

### Swimming



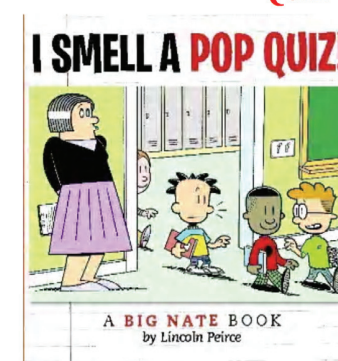
### Quick cricket



### BLT



### Quiz



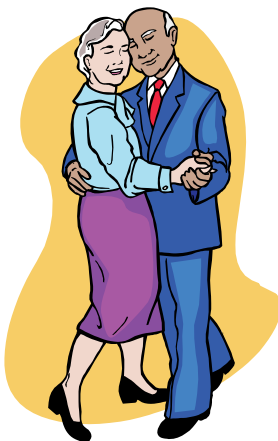
# The Tea Dance - a lost tradition

## The history of the Tea Dance

It is said that the 7th Duchess of Bedford invented the tradition of Afternoon Tea in the early 1840's. Feeling hungry mid afternoon, and knowing dinner would not be served until sometimes as late as 9:00pm, she ordered cakes and bread and butter to her rooms. In the beginning of the 20th Century, tea became much more sociable. The eligible ladies and gentlemen of wealthy and aristocratic families used to entertain their friends by dancing in each other's homes.

## The Tea Dance

It's the Sunday tea dance and they'll all be here today,  
Aches and apains forgotten, dance the afternoon away,  
Foxtrots, quick steps, waltzs, some are slow but some are nifty,  
With memories of how it was back in 1950,  
Norman's in the toilet and he's struggling to pee  
He's got trouble with his prostrate, and he'll likely miss tea.  
Eddy's got a new love that he met in Thornton Heath,  
She does a lovely tango, but she hasn't any teeth,  
His latest fancy footwork nearly broke his partners neck  
She mistook his outside swivel for a travelling contra check.  
Ida's had her hair done and she's ready for a saunter,  
She had vindaloo las night and its coming back to haunt her.  
Florry's mini skirts revealing when she's spinning in the jive,  
She really shouldn't wear a thong approaching 85.  
They've had their tea and cake and chat and had a little laugh,  
And gamely rise with creaking knees to face the second half.  
Norman made it back in time for rumba number one,  
His cucaracha's very neat, but he's left his flies undone.  
Vera's fallen over in a massive Crimplene heap,  
Bert's got indigestion and Mabel's fast asleep.  
It's the last waltz time and they get up for Humperdinck's old tune,  
And then "Goodbye, good luck, take care, God will see you soon".



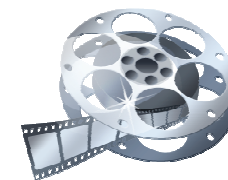
Bill & Jill Thompson

## Rally Plaque Book.

If you want to see the rally plaque book to help decide on the motif you want on the plaque, don't hesitate in contacting me. You can be lent the rally plaque book for you to take a look at, but please remember to return it, so that others may have the opportunity to see and use it. Plaque motif's can also be found on our website.

Andy Gray  
Centre P.R.O.

# Kids go to Cineworld



On the weekend 12/14 November 2010 the Junior Committee will be paying for all Beds Centre Members Children attending the rally to go to the Aspects Cinema in Bedford.

Emma Gray  
Junior Chair



## Servicing & Maintenance

Repairs & Modifications to all makes of Touring and Motor Caravans

Full NCC Annual Service Checks

Dink & Dent Repairs

Moisture Prevention & Cure

Insurance Approved Repair

Modifications & Upgrades

Online Accessory Shop

## New Caravans and Used Caravans



Unit 16 Hertford Ind Est, Caxton Hill, HERTFORD, Hertfordshire. SG13 7NF

[www.mgcaravans.com](http://www.mgcaravans.com)

01992 504990

For the latest information on Rallies, Centre News, Rally photo's and downloads, then why not visit our website.

[www.bedscentrecc.com](http://www.bedscentrecc.com)

The Best Place to be...

